

# Medical Office Space

239 Ash Street Tipton, IN 46072

Medical Office

3,750 SF



Keith Dedrick CCIM, SIOR  
keith@ccgbrokers.com  
317-502-3622

Corporate Commercial Group  
11495 N Pennsylvania Street Ste. 225  
Carmel, IN 46032



## Property Details

### 239 Ash Street Tipton, IN 46072

<b>Lease Rate:</b>	<b>\$15.00/SF NNN</b>
Available Space:	+/- 3,750 SF
Total Acreage:	0.61 Acres
Total Buildings SF:	+/- 5,250 SF
Year Built:	1989
Parcel ID :	80-11-12-200-006.020-002
Annual Property Tax:	\$4,849
Building Type:	Office
County:	Tipton



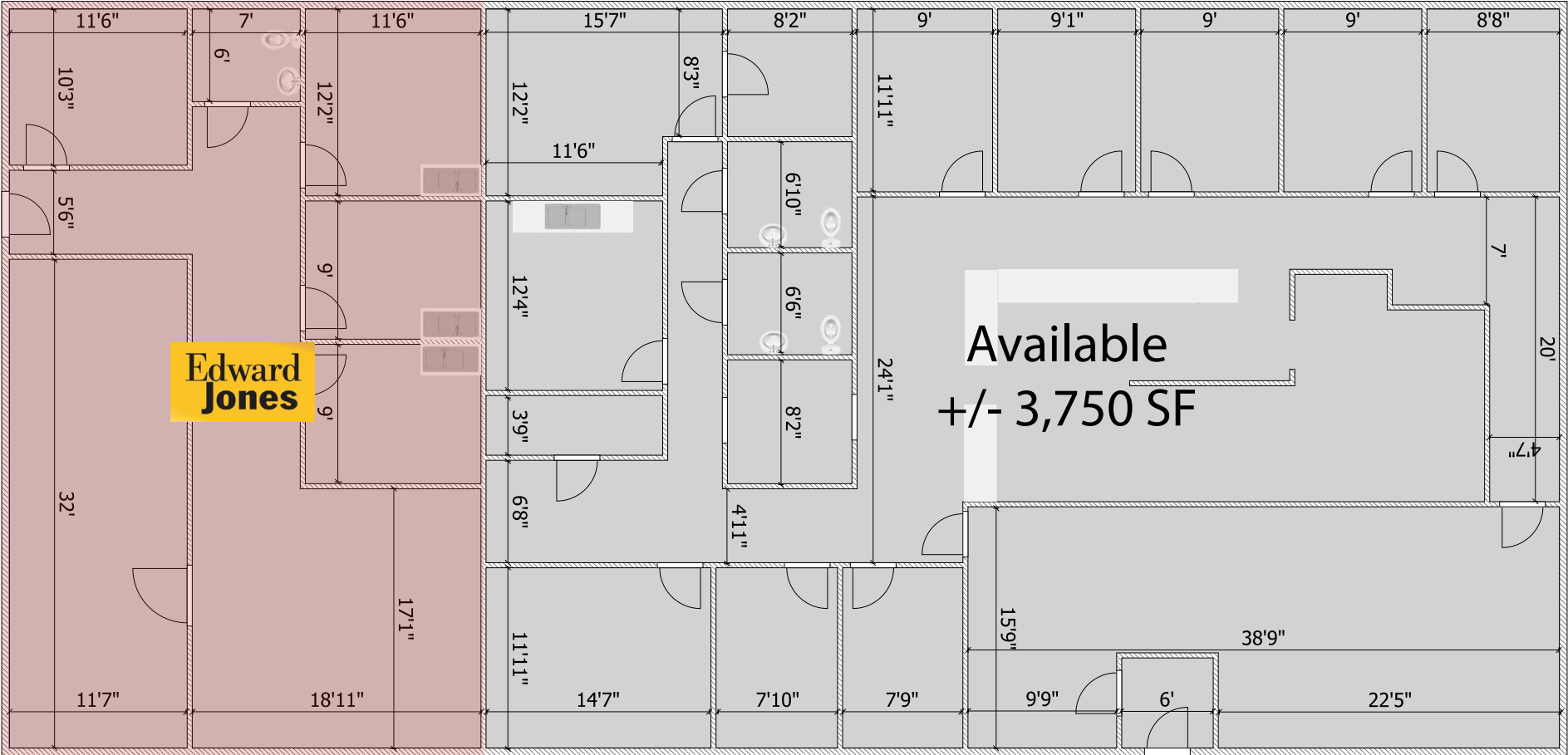
# Photos - Exterior



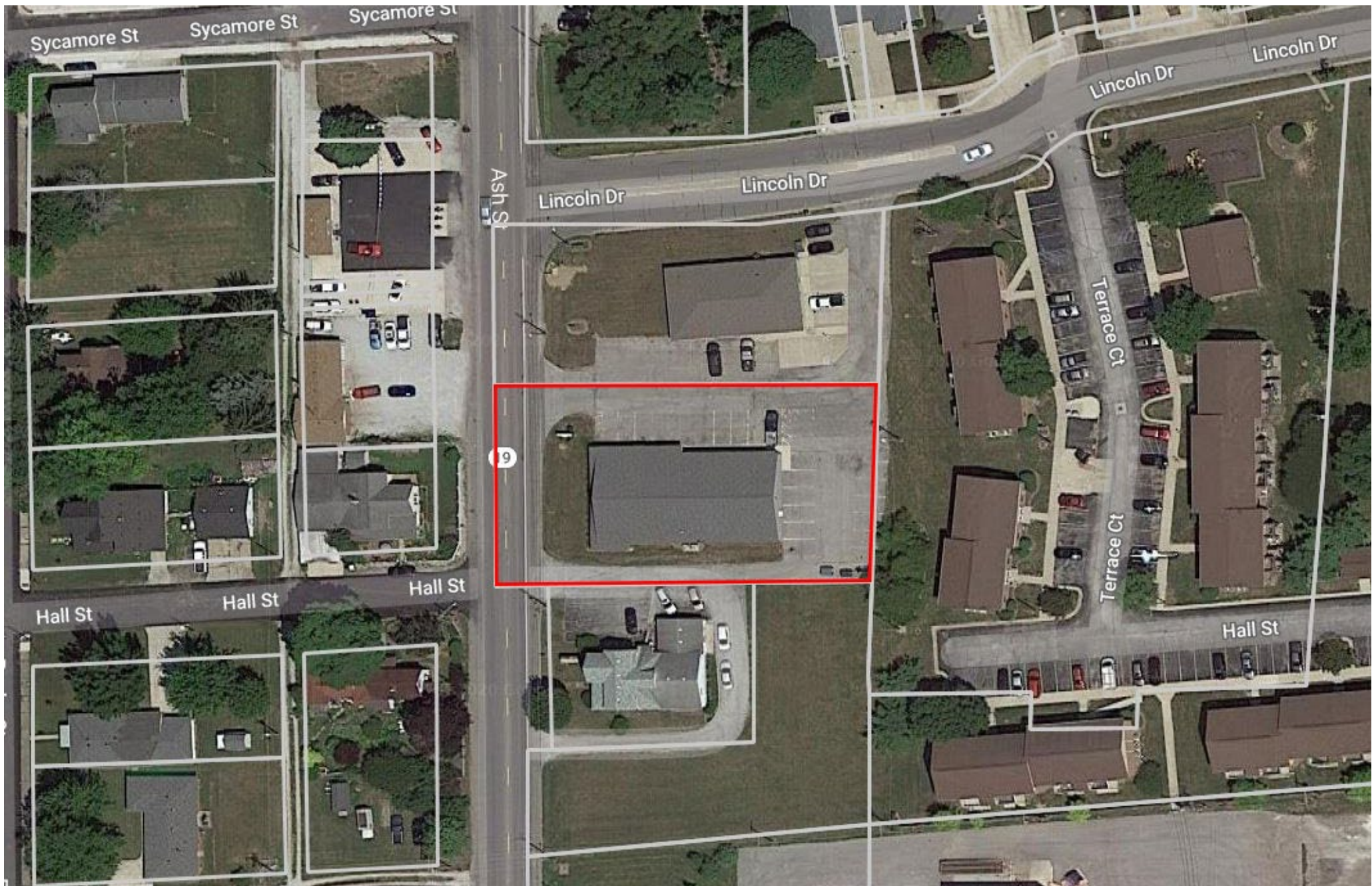
# Photos - Interior



# Layout



# Site Plan



# Location Overview

