

# South Indianapolis Industrial Building

5870 Elmwood Avenue Indianapolis, IN 46203

Industrial  
22,872 SF



Keith Dedrick CCIM, SIOR  
keith@ccgbrokers.com  
317-502-3622

Corporate Commercial Group  
11495 N Pennsylvania Street Ste. 225  
Carmel, IN 46032



## Property Details

5870 Elmwood Avenue Indianapolis, IN 46203

Asking Price:	\$1,300,000.00
Total Acreage:	1.87 Acres
Total Buildings SF:	22,872 SF
Industrial SF:	15,992 SF
Office SF:	6,880 SF
Year Built:	1973
Parcel ID :	49-10-34-120-012.000-302
Annual Property Tax:	\$13,279
Zoning:	I-3
Building Type:	Industrial
County:	Marion
Drive-in Doors:	1-16' X 10' & 1-10' X 8'
Dock Doors:	3
Ceiling Height Peak:	21'
Ceiling Height Edge:	15'



# Site Plan



# Photos - Exterior



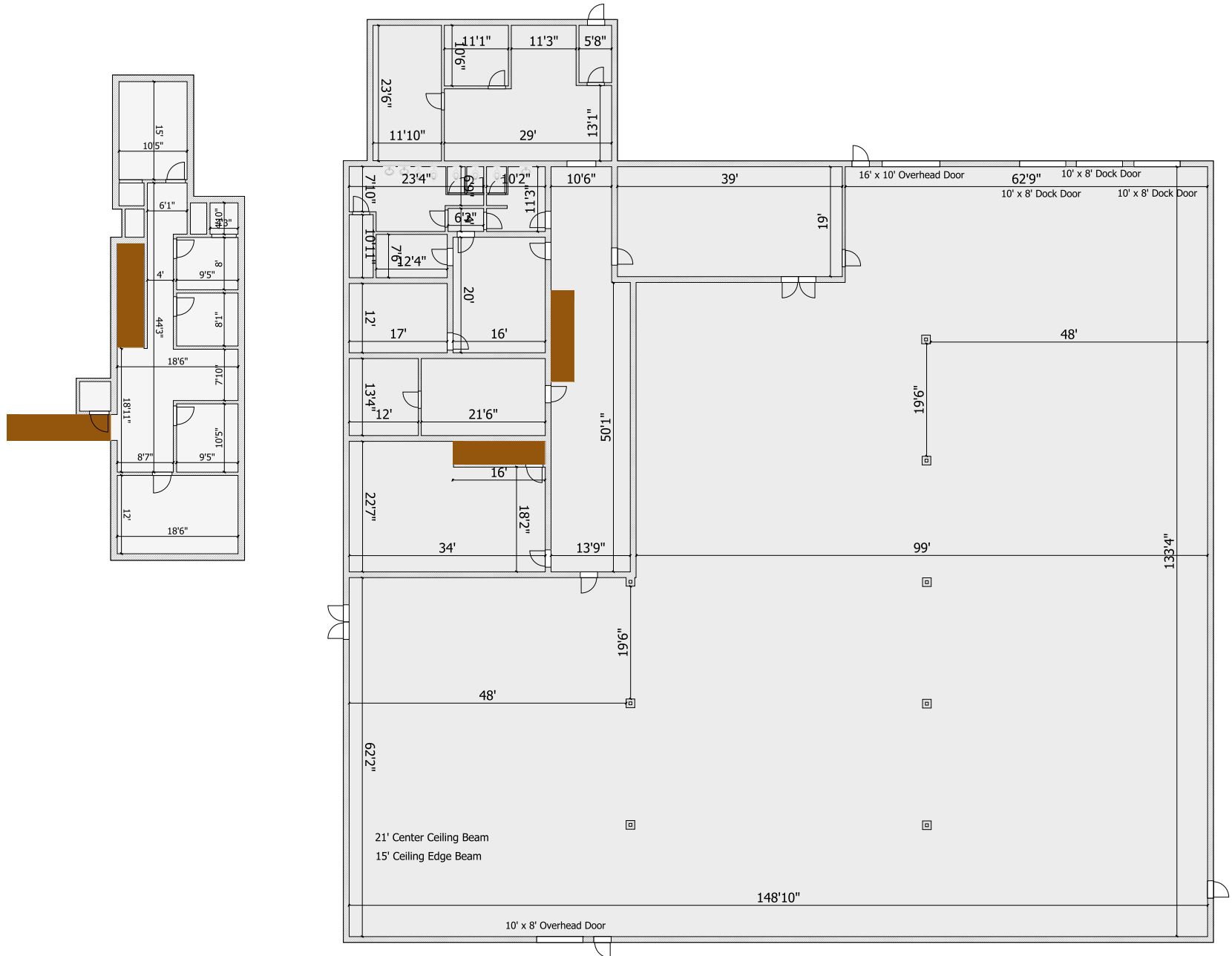
## Photos - Interior



# Aerial



# Layout



# Location Overview

